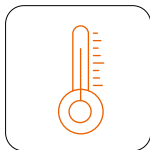


MTP10-B6F55-L11(Si-A)



MEMS Infrared temperature sensor

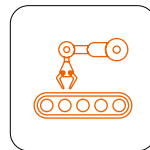
Non-contact temperature sensor



Non-contact temperature
measurement



Pyrometer

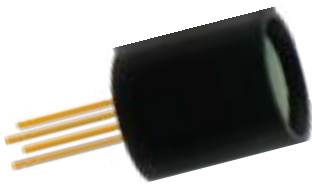


Continuous monitoring
of manufacturing
temperature

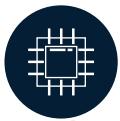


Industrial temperature
transmitter

MTP10-B6F55-L11 (Si-A)



The MEMS infrared thermopile temperature sensor is a thermopile sensor with a built-in optical filter, a high-precision NTC thermistor, and a TO-46 package. It has a sensing area of $1.35 \times 1.35 \text{ mm}^2$. It has the characteristics of small size, fast response speed, high sensitivity and high precision, and is widely used in various non-contact temperature measurement scenarios.



MEMS thermopile chip



Fast response



High sensitivity



High precision NTC



5.5~14 μm long pass filter

Product parameters

Model	MTP10-B6F55-L11 (Si-A)
Package form	TO-46
Field of view (50% maximum signal)	10°
D:S	8:1
Average transmittance	$\geq 80\%$, 5.5~14 μm
Working temperature	-30~100°C
Storage temperature	-40~125°C

Shenzhen MemsFrontier Electronics Co.,Ltd.

Web: www.memsf.com

E-mail: info@memsf.com

Tel: 0755-21386871

Add: 3rd Floor B2 Building, Zhaoshangju Technology Park,
Guangming District, 518107, Shenzhen, China