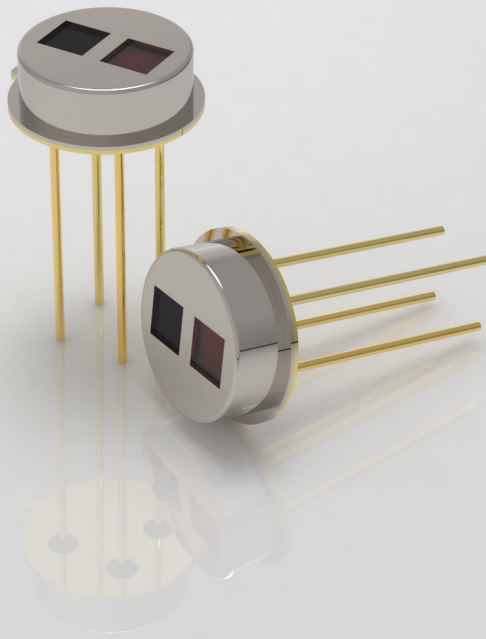


MTP20-A6-CO2



Infrared Thermopile Gas Sensor

Dual channel carbon dioxide gas sensor



Smart home appliances



smart building

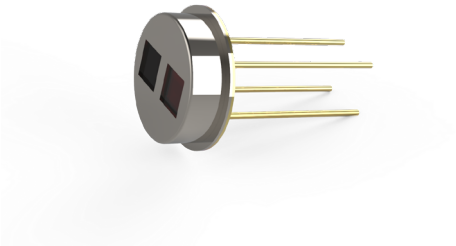


Smart agriculture

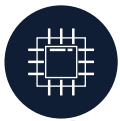


medical instruments

MTP20-A6-CO2



The MTP20-A6-CO2 infrared thermopile gas sensor is based on the principle of NDIR (non-dispersive infrared) technology and embedded with high-precision NTC thermistor and MEMS thermopile chip. It has the characteristics of high sensitivity, high precision, excellent long-term stability, low maintenance cost and long service life. It can be widely used in smart home appliances, automotive electronics, medical equipment, smart agriculture and other fields.



MEMS thermopile chip



TO-39 (dual channel)



High sensitivity



High precision NTC



4.33/3.95 μ m narrow band filter

Product parameters

Model	MTP20-A6-CO2
Detect gas type	CO2
Package form	TO-39 (dual channel)
Center wavelength (working channel/reference channel)	4.33 μ m/3.95 μ m
Half-wave width (working channel/reference channel)	120nm/90nm
Peak transmittance	> 80%
Working temperature	-30~100°C
Storage temperature	-40~125°C

Shenzhen MemsFrontier Electronics Co.,Ltd.

Web: www.memsf.com

E-mail: info@memsf.com

Tel: 0755-21386871

Add: 3rd Floor B2 Building, Zhaoshangju Technology Park,
Guangming District, 518107, Shenzhen, China