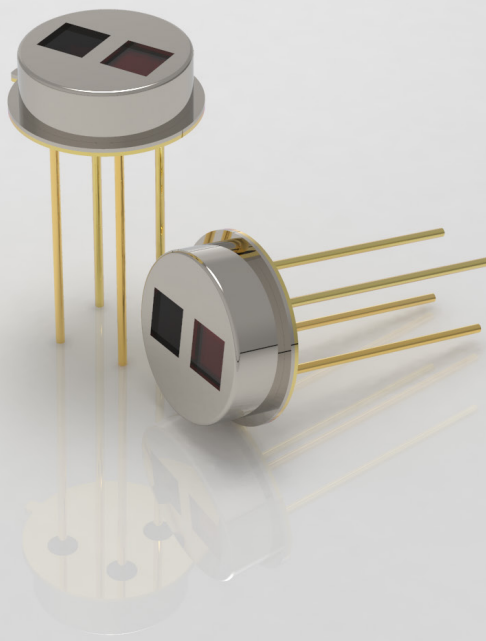
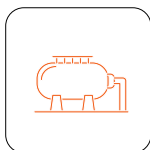


MTP20-A6-SF6

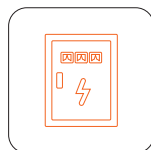


Infrared Thermopile Gas Sensor

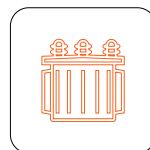
Dual channel sulfur hexafluoride gas sensor



Gas storage



Electric box switch

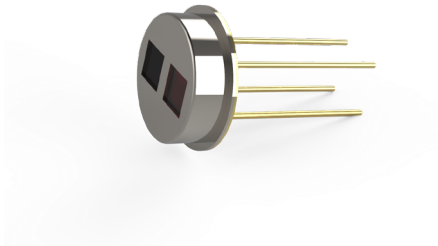


Distribution station

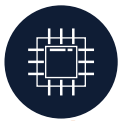


Industrial process monitoring

MTP20-A6-SF6



The MTP20-A6-SF6 infrared thermopile gas sensor is based on the principle of NDIR (non-dispersive infrared) technology and embedded with high-precision NTC thermistor and MEMS thermopile chip. It has the characteristics of high sensitivity, high precision, excellent long-term stability, low power consumption, low maintenance cost, long service life and no oxygen dependence. It can be widely used in gas storage, electrical box switches, power distribution stations, industrial process monitoring and other fields.



MEMS thermopile chip



TO-39 (dual channel)



High sensitivity



High precision NTC



10.56μm/10μm narrow band filter

Product parameters

Model	MTP20-A6-SF6
Detect gas type	SF6
Package form	TO-39 (dual channel)
Center wavelength (working channel/reference channel)	10.56μm/10μm
Half-wave width (working channel/reference channel)	370nm/370nm
Peak transmittance	> 80%
Working temperature	-30~100°C
Storage temperature	-40~125°C

Shenzhen MemsFrontier Electronics Co.,Ltd.

Web: www.memsf.com

E-mail: info@memsf.com

Tel: 0755-21386871

Add: 3rd Floor B2 Building, Zhaoshangju Technology Park,
Guangming District, 518107, Shenzhen, China