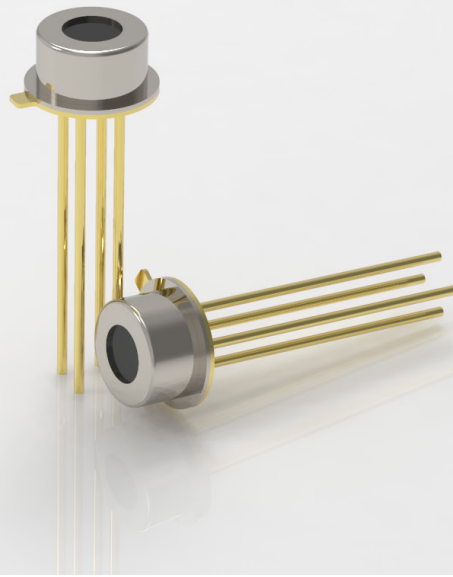


MTP20-B6-CH4



Infrared Thermopile Gas Sensor

Single channel methane gas sensor



Smart home appliances



Smart building

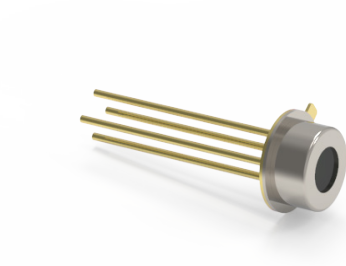


Coal mine

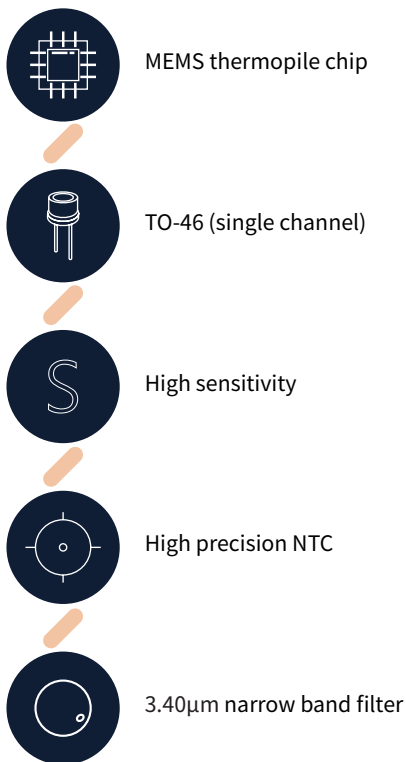


Petrochemical

MTP20-B6-CH4



The MTP20-B6-CH4 infrared thermopile gas sensor is based on the principle of NDIR (non-dispersive infrared) technology and embedded with high-precision NTC thermistor and MEMS thermopile chip. It has the characteristics of high sensitivity, high precision, excellent long-term stability, low power consumption, low maintenance cost, long service life and no oxygen dependence. It can be widely used in smart buildings, smart homes, coal mines, petrochemicals, environmental protection and other fields.



Product parameters

Model	MTP20-B6-CH4
Detect gas type	CH4
Package form	TO-46 (single channel)
Central wavelength	3.40μm
Half wave width	180nm
Peak transmittance	> 80%
Working temperature	-30~100°C
Storage temperature	-40~125°C

Shenzhen MemsFrontier Electronics Co.,Ltd.

Web: www.memsf.com

E-mail: info@memsf.com

Tel: 0755-21386871

Add: 3rd Floor B2 Building, Zhaoshangju Technology Park,
Guangming District, 518107, Shenzhen, China